



Ice Cube

# CB 1565 HC

B-Qube



## Self-contained ice maker - Sprayer system Daily production up to 160 kg

Hotel	● ● ● ● ● ● ● ●	Hotel	● ● ● ● ● ● ● ●
Restaurant	● ● ● ● ● ● ● ●	Restaurant	● ● ● ● ● ● ● ●
Fast food	● ● ● ● ● ● ● ●	Fast food	● ● ● ● ● ● ● ●
Bar	● ● ● ● ● ● ● ●	Bar	● ● ● ● ● ● ● ●
Disco	● ● ● ● ● ● ● ●	Disco	● ● ● ● ● ● ● ●
Fish markets	● ● ● ● ● ● ● ●	Fish markets	● ● ● ● ● ● ● ●
Supermarkets	● ● ● ● ● ● ● ●	Supermarkets	● ● ● ● ● ● ● ●
Medical & SPA	● ● ● ● ● ● ● ●	Medical & SPA	● ● ● ● ● ● ● ●
Industry	● ● ● ● ● ● ● ●	Industry	● ● ● ● ● ● ● ●



Available Drain Pump (DP) version



Available Drain Pump (DP) version

### ► Features & Plus

- Compact and crystal cube
- AISI 304 SS Scotch Brite finish
- Tropical class +43°C
- Air or water cooling system
- Easy cleanable internal rounded surfaces
- HCFC-Free insulated storage
- RoHS Free
- Disappearing insulated door
- Electromechanical operation
- Adjustable Stainless Steel feet
- ON-OFF rocker switch
- Standard and special voltages
- HFC Free



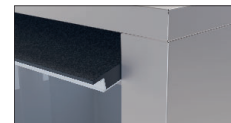
Carrozzeria AISI 304 Scotch Brite



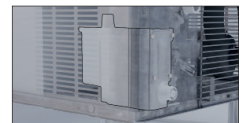
Adjustable stainless steel feet



Easy cleanable internal rounded surfaces



Disappearing insulated door



Drain Pump (DP)

## 2 Years Warranty subject to limitations

### ► Certifications available for this model



[www.bremaice.it](http://www.bremaice.it)  
[info@bremaicegroup.it](mailto:info@bremaicegroup.it)

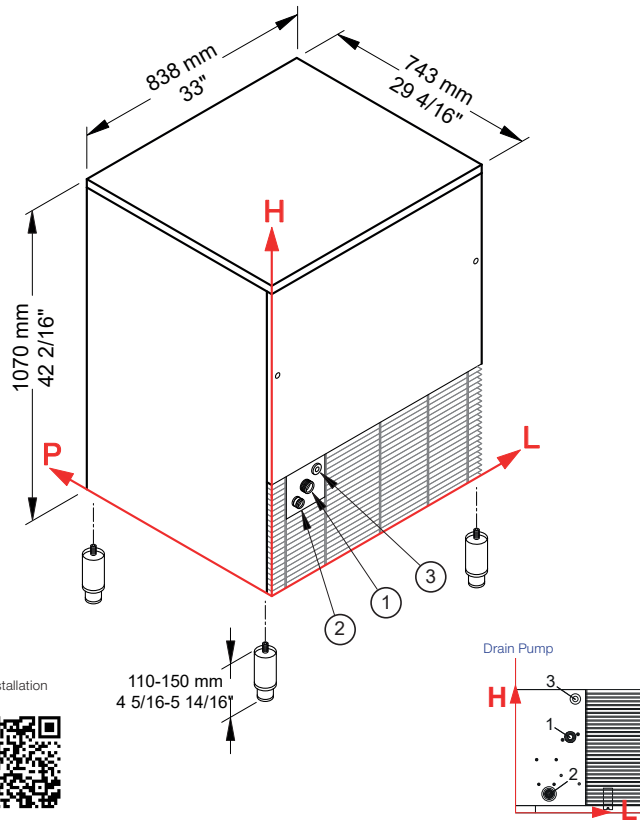
We are Brema Group





## Self-contained ice maker - Sprayer system

### Daily production up to 160 kg

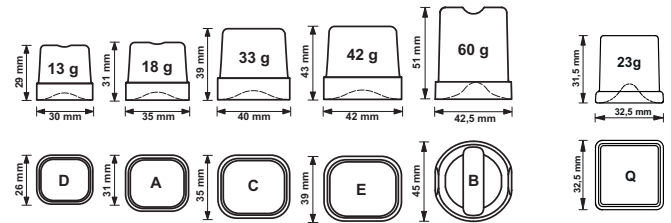


### ► Working conditions

- Location: **Indoor**

	Min	Max
Ambient temperature	+10° C / +50° F	+43° C / 110° F
Water temperature	+3° C / +37° F	+32° C / +90° F
Voltage	-10%	+10%
Water inlet pressure	1bar (14 psi)	6bar (84 psi)

### ► Available ice cube size



### ► Performances

		Water temperature					
		7° C	45° F	15° C	60° F	21° C	70° F
Air temperature	10° C	160 kg					
	50° F		353 lbs				
	21° C			152 kg			
	70° F				335 lbs		
	32° C					145 kg	
	90° F						320 lbs

### ► Connections standard version

- ① Water in.: 141 mm / 5 9/16" - 290 mm / 11 7/16" - 3/4"
- ② Water out.: 79 mm / 3 2/16" - 245 mm / 9 10/16" - 24 mm / 15/16"
- ③ Electrical connections: 186 mm / 7 5/16" - 326 mm / 12 13/16"

### Connections DP version

- 1 Water in.: 151 mm / 5 15/16" - 209 mm / 8 4/16" - 3/4"
- 2 Water out.: 92 mm / 3 10/16" - 52 mm / 2 1/16" - 24 mm / 15/16"
- 3 Electrical connection: 165 mm / 6 8/16" - 314 mm / 12 6/16"

All measures are referred to the rear bottom-left corner (L-H-Ø)

### ► Technical information

Production in 24h	152 kg / 335 lbs
Store capacity, up to	65 kg / 143 lbs
Cooling system	A - W
Kind of cube	A-18g, C-33g, D-13g, E-42g, B-60g, Q-23g
Refrigerant	R290
Standard voltage	220-240 V ~ 50 Hz
Average power consumption	1150 W
Fuse	16 A
Electrical consumption	20 kWh/100kg

All the technical information must be considered at the following conditions:

- Sizes without feet
- Standard Cube (18 g)
- Ambient temperature +21° C
- Water temperature +15° C
- Electrical consumption at +32° C (standard voltage)
- Average power consumption at +43° C (standard voltage)

**Models and specifications are subject to change without notice**

Water consumption	A: 2 l/kg - 24 gal/100 lbs
	W: 11,9 l/kg - 142,6 gal/100 lbs
Sizes (L-P-H mm)	838 - 743 - 1070
(L-P-H in)	33 - 29 4/16 - 42 2/16
Sizes with pack (L-P-H mm)	880 - 785 - 1245
(L-P-H in)	34 10/16 - 30 14/16 - 49
Net weight	118 kg / 260 lbs
Gross weight	138 kg / 304 lbs
Finish	Stainless steel, 18/8, scotch brite

Rev. 00 - Issued February 2026

