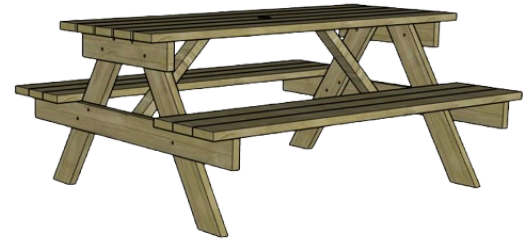


# ASSEMBLY INSTRUCTIONS

Traditional Picnic Table (PT104) With Fold-up Bench Seats



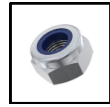
## FIXING LIST



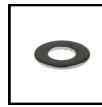
14 X  
70mm Screws



4 X  
Bolts

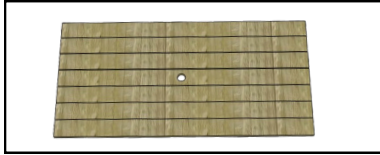


4 X  
Nylock Nuts



8 X  
Washers

## PARTS LIST



A: 1 X TABLE TOP (WITH PARASOL HOLE)



B: 2 X LEG FRAMES (WITH OPPOSITE NOTCHES)

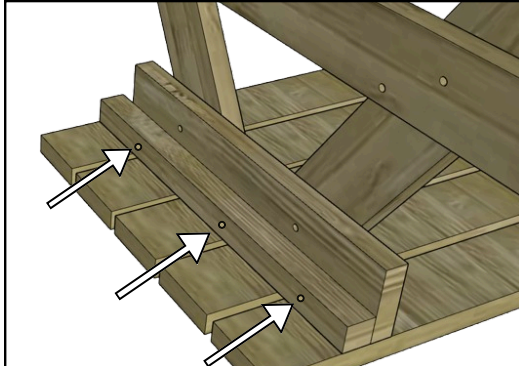


C: 2 X BENCH SEAT ASSEMBLIES



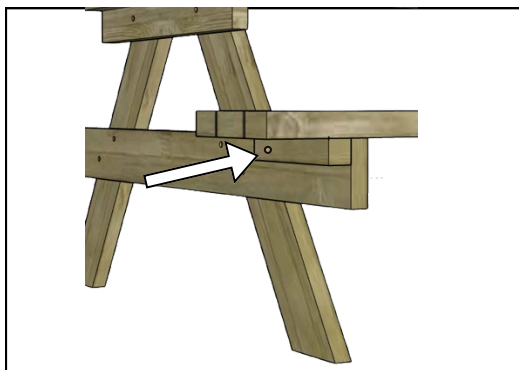
D: 2 X SUPPORT BARS

## ASSEMBLY INSTRUCTIONS



### STEP 1:

Lie the Table Top (A) upside down on the floor, place the leg assemblies (B) in position as shown on the image. Insert three 70mm screws each side into the cross brace underneath the table top, and screw into the leg assemblies.

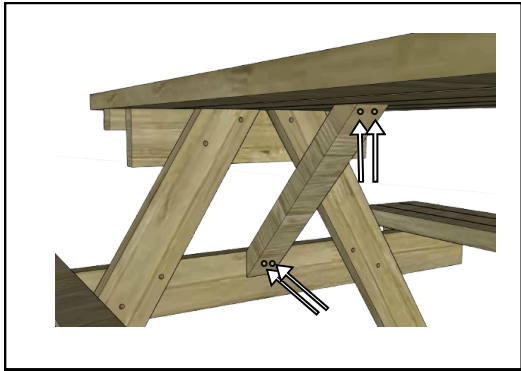


### STEP 2:

Turn the table over now so that its standing upright. Place the seats assemblies (C) over the leg frames on both sides of the table and put the bolts in to place through the pre-drilled holes (with the bolt head always on the outside of the leg frame).

Place a washer onto the bolt (so it sits between the leg frame and support bar fixed to the seat assembly). Now push the bolt all the way through and add a second washer followed by the Nylock bolt and loosely tighten. Do the same for each side of the bench.

Finally, tighten the nuts with a spanner but make sure you do not over-tighten them so the bench can be easily lifted up and down.



**STEP 3:**

Finally, screw the support bars (D) in place using 4 x 70mm screws.

Each bar should be screwed up through the top of the bracket into the table (x 2 screws) and through the bottom of the support bracket into the leg assemblies (x 2 screws), as the image indicates.



**YOUR PICNIC TABLE IS NOW FULLY ASSEMBLED AND  
READY FOR USE. WE HOPE YOU ENJOY IT.**

**PRODUCT INFORMATION**

Your furniture has been made with pressure treated timber which protects against rot for up to 20 years.

To help protect and extend the life of your furniture, we recommend an additional application of a suitable oil-based wood protector or preservative soon after delivery, and then annually to help maintain the longevity of your furniture.

We recommend 'Rhino oil' which is available in the Clear, to help maintain the original colour of your furniture.

Wood is a natural product and minor splits, and shade variations are characteristic of the softwood used in the production of this furniture. We strongly recommend the use of a protective treatment to help protect from excessive drying and splitting during extreme weather conditions, and to help weatherproof your furniture.

We recommend periodic checking and tightening of nuts if required as your furniture ages.