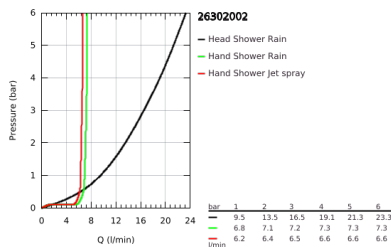
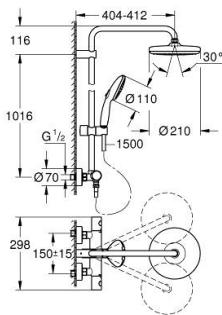


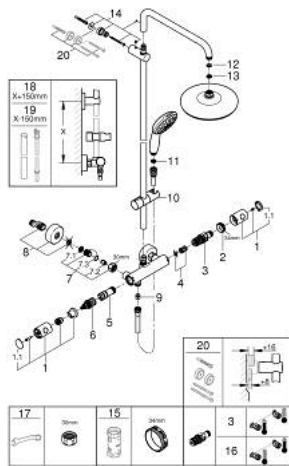
26 302 002 TEMPESTA SYSTEM 210 SHOWER SYSTEM WITH THERMOSTAT FOR WALL MOUNTING



PRODUCT DESCRIPTION

- Colour: chrome
- consisting of:
 - horizontal swivable 390 mm projection shower arm
 - exposed thermostatic shower with Aquadimmer function
 - allows change between:
 - head shower Tempesta 210 (26 408)
 - Rain spray pattern
 - with ball joint
 - rotation angle $\pm 15^\circ$
 - hand shower Tempesta 110 (28 422)
 - 2 spray patterns: Rain, Jet
 - adjustable height via gliding element
 - RotaflexTwistStop shower hose 1750 mm 1/2" x 1/2" (28 410)
 - maximum flow rate (at 3 bar): 16.5 l/min
 - GROHE TurboStat compact cartridge with wax thermoelement
 - GROHE SafeStop safety button at 38°C (calibration required)
 - GROHE SafeStop Plus optional temperature limiter at 43°C included
 - GROHE SmartSwitch - easily rotate the dial to enjoy your preferred spray option
 - GROHE DreamSpray perfect spray pattern
 - ShockProof silicone ring prevents damage caused by a shower falling
 - GROHE LongLife finish
 - GROHE SpeedClean effortless limescale removal
 - Inner WaterGuide for a longer life
 - TwistStop preventing the hose from twisting
 - suitable for instantaneous heaters from 18 kW/h
 - minimum flow rate 5 l/min.
 - optional upgrade: GROHE EasyReach tray (26 362), sold separately

26 302 002 TEMPESTA SYSTEM 210 SHOWER SYSTEM WITH THERMOSTAT FOR WALL MOUNTING



SPARE PARTS, November 2021 – now

- 1: Metal handle 1/2" (Order-nr. 47984000)
- 1.1: Cover Cap (Order-nr. 6458500M)
- 2: retaining ring (Order-nr. 47743000)
- 3: Thermostatic compact cartridge 1/2" (Order-nr. 47439000)
- 4: Sound absorber (Order-nr. 47398000)
- 5: Water flow (Order-nr. 47751000)
- 6: Aquadimmer (Order-nr. 12433000)
- 7: Non-return valve (Order-nr. 47189000)
- 7.1: Dirt strainer (Order-nr. 0726400M)
- 7.2: Non-return valve (Order-nr. 08565000)
- 7.3: O-Ring Ø17 x Ø2 (Order-nr. 0305500M)
- 8: S-union (Order-nr. 12662000)
- 9: Non-return valve (Order-nr. 08565000)
- 10: Sliding piece (Order-nr. 48609000)
- 11: Strainer (Order-nr. 0700200M)
- 12: Fibre seal dia. Ø 18,5 x Ø 12 x 2 (Order-nr. 0138900M)
- 13: Strainer (Order-nr. 48007000)
- 14: Outlet shower holder (Order-nr. 48423000)
- 15: Socket spanner (Order-nr. 19332000)*
- 16: GROHE TurboStat cartridge 1/2" (Order-nr. 47175000)*
- 17: Special spanner (Order-nr. 19377000)*
- 18: Shower system pipe for retrofitting (Order-nr. 48514000)*
- 19: Shower system pipe for retrofitting (Order-nr. 48515000)*
- 20: Spacer (Order-nr. 26496000)*

*Special accessories